



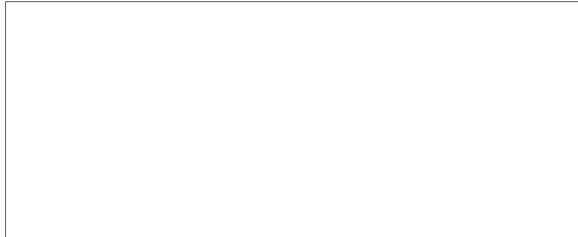
Our Ref: DE18/45994
Your Ref: 7137199

Freedom of Information
Information Release Unit
Customer Services and Business Support

31 Flinders Street
Adelaide SA 5000

GPO Box 1152
Adelaide SA 5001
DX 541

Tel 08 8226 3231
Email education.foi@sa.gov.au
www.education.sa.gov.au



Dear

RE Freedom of Information – Determination

I refer to your Freedom of Information application received by the Department for Education on 19 October 2018, requesting access to:

'All documents which show average class sizes or student to teacher ratios in government schools in South Australia and those in government schools in other States and Territories that includes data from 2008 to 2018, by year level or sector (ie by primary or secondary).'

Searches have been conducted for information in relation to your request.

Three documents have been located showing average class sizes for junior primary classes for 2008 to 2010 and I have determined to release those documents in full.

Please note the department only centrally reports on junior primary schools' class sizes.

Data for South Australian government schools showing average class sizes for junior primary classes from 2011 to 2018 can be found on the department's website at the following links, by selecting "Index of educational disadvantage" per year:-

<https://www.education.sa.gov.au/department/about-department/statistics-and-reports-about-sites-students-and-staff>

SA (junior primary school class sizes only)

<https://data.sa.gov.au/data/dataset/junior-primary-class-sizes-by-index-of-disadvantage-for-sa-government-schools>

Access to documents available online is therefore refused, pursuant to Section 20(1)(b) of the *Freedom of Information Act 1991*, ("the FOI Act"), which provides that:-

20 - Refusal of access

(1) *An agency may refuse access to a document –*

(b) *if it is a document that is available for inspection at that or some other agency (whether as part of a public register or otherwise) in Accordance with Part 2, or in accordance with a legislative instrument other than this Act, whether or not inspection of the document is subject to a fee or charge;*

Data on student teacher ratios for all States and Territories currently available is also published, therefore please refer to the following links for access to that information.

1. *Report on Government Services 2018* PART B, CHAPTER 4 reports on students-to-staff ratios, teaching staff, all school sectors by State and Territory from 2007 to 2016 (refer table 4A, 17).
<https://www.pc.gov.au/research/ongoing/report-on-government-services/2018/child-care-education-and-training/school-education>
2. *ACARA National reports on schooling* in Australia annually reports on student staff ratios from 2001 to 2017 by State and Territory on their data portal.
<http://www.acara.edu.au/reporting/national-report-on-schooling-in-australia-data-portal/student-teacher-ratios>
3. The Organisation for Economic Co-operation and Development (OECD) most recent report 2017 *Education at a Glance* reports on student staff ratios and class sizes at the Australian level as compared to other OECD countries.
<http://www.oecd.org/education/education-at-a-glance-2018-data-and-methodology.htm>
4. Queensland
<https://qed.qld.gov.au/publications/reports/statistics/schooling/downloadable-data-files>
5. Victoria
<https://www.education.vic.gov.au/Documents/about/department/brochurejuliy.pdf>
6. New South Wales
<https://data.cese.nsw.gov.au/data/dataset?groups=class-size>
7. Tasmania
<https://data.gov.au/dataset/key-data-march-2016-department-of-education-tasmania/resource/ab2f53c4-6e64-40f0-a2b3-d6366546ff7d>

If you are dissatisfied with this determination, you are entitled to exercise your right for an internal review in accordance with section 29(1) of the FOI Act. To make an internal review application, please complete an application for Internal Review which can be downloaded from <https://www.education.sa.gov.au/department/legal-services/freedom-information-foi-requests>. Alternatively an application may be made in writing, addressed to the Principal Officer of this agency and must be accompanied with the appropriate fee (if applicable). This application must be lodged within 30 days from the date of this determination.

In accordance with the requirements of Premier and Cabinet Circular PC045, details of your FOI application, a copy of your notice of determination, schedule of documents and the documents to which you are given access, may be published in the agency's disclosure log. A copy of PC045 can be found at <http://dpc.sa.gov.au/what-we-do/services-for-government/premier-and-cabinet-circulars>. If you disagree with publication, please advise the undersigned at education.foi@sa.gov.au within 30 days from the date of notice of determination.

Should you require further information, please contact Freedom of Information on telephone (08) 8226 3231 or email education.foi@sa.gov.au.

Yours sincerely



Chrissie Argitis

ACCREDITED FREEDOM OF INFORMATION OFFICER

19 November 2018

Statistical Update

MAY 2008
Issue 63



Government of South Australia
Department of Education and
Children's Services

South Australian Government
Schools

TERM 1 2008 JUNIOR PRIMARY CLASS SIZES

This publication provides summary statistics relating to junior primary class sizes in South Australian government schools as at Term 1 2008. These data are derived from roll class information collected in the school enrolment census held on Friday, 22 February 2008.

Introduction

Roll class information was first collected in the Term 1 2003 Census. The roll class was used as an estimate for the measure of class size for junior primary classes. The data used include classes that have years Reception, Year 1 and/or Year 2 students. In some schools, junior primary classes also include students from higher year levels. The scope of the analysis has been limited to only those junior primary classes up to year 3, where the year 3 students are the older age group in a combined class. Special schools and classes were excluded from the analysis due to different class arrangements in these settings.

The average junior primary class size for the state was 20 students per class (with a standard deviation of ± 5), and has remained stable since 2003 when this information was first collected.

The frequency of class sizes range from less than 5 to 31 with the most frequently occurring class size being 23 students.

Average Class Sizes

Table 1: Average Junior Primary Class Size by District, 2004-2008

District	Average Number of Students per Class			Difference 2004-8
	2004	2006	2008	
Aboriginal Lands	11	11	13	2
Barossa	21	20	20	-1
East	23	22	22	-1
Eyre	19	18	19	0
Flinders	17	18	17	0
Hills Murraylands	20	19	20	0
Inner South	22	21	21	-1
Kumangka Para	19	18	19	0
Limestone Coast	20	20	19	-1
Melro West	18	19	19	1
North East	22	21	21	-1
Northern Country	18	18	18	0
Riverland	17	17	17	0
Salisbury	20	19	19	-1
South West	22	21	21	-1
Southern Sea and Vines	21	19	21	0
Wakefield	18	17	18	0
Wallara	21	21	21	0
Total for State	20	20	20	0

Note: standard deviation ± 5 over the period 2004-2008

The districts with the highest average junior primary class size in 2008 were East (22 students) and Inner South, North East, South West, Southern Sea and Vines and Wallara (all with an average of 21 students).

The districts with the lowest average number of students per junior primary class were Aboriginal Lands (13 students) and Flinders and Riverland (each with an average of 17 students).

Seven districts had a decrease in the average class size from 2004, with the majority of these being in the metropolitan area. Nine districts stayed the same. The Aboriginal Lands district increased marginally in 2008; however it is still significantly lower than the state average of 20. Metro West district had an increase in average class size from 2004, but remained the same between 2006 and 2008.

Number of Students by Class Type

Due to a continuous enrolment policy where reception students are permitted to enrol throughout the year, reception only and reception combined classes have smaller averages ranging from 13 students in Reception/Yr1/Yr2/Yr3 classes to 18 students in Reception/Yr 1 and Reception/Yr 1/Yr 2 classes. This compares with higher averages of 20 students for Year 1 classes and 22 students for Year 2 classes (up from 21 in 2004 but the same as 2006).

The class type with the highest number of students per class was the Year 2/Year 3 classes with an average of 23, down from 24 in 2006 and 2004.

Table 2: Average Junior Primary Class Size by Class Type, 2004-2008

Class Type	Average Number of Students per Class		
	2004	2006	2008
Reception	16	15	16
Reception/Year 1	19	18	18
Recp/Year 1/Year 2	17	17	18
Recp/Yr 1/Yr 2/Yr 3	13	14	13
Year 1	21	21	20
Year 1/Year 2	23	22	22
Year 1/Year 2/Year 3	19	21	19
Year 2	21	22	22
Year 2/Year 3	24	24	23

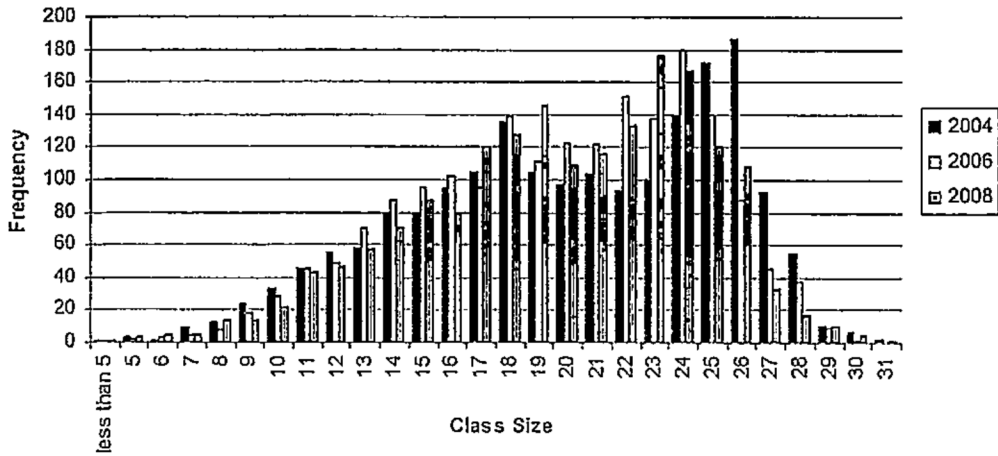


Figure 1: Frequency of Class Size, 2004, 2006 and 2008

Frequency of Class Size

Figure 1 provides a frequency distribution of class sizes.

The most frequently occurring class sizes were 23 students (176 classes) and 24 students (167 classes). This has changed from 2004 when the most frequently occurring class sizes were 26 students (186 classes) and 25 students (172 classes).

Class Size by School Subtype

Rural Schools, Aboriginal Schools and Anangu Schools had the smallest average classes, with 10, 13 and 13 students respectively.

Primary/Secondary Schools, Junior Primary Schools, Primary Schools and Area Schools all had larger junior primary class sizes with the average number of students per class being 21, 20, 20 and 18.

Class Size by Class Type

Ninety one percent of junior primary classes had less than 26 students per class. This is an increase from 81% in 2004.

Forty six percent of junior primary classes had less than 20 students per class, this is an increase from 44% in 2004.

Class Type	% Classes Below 20 Students per Class	% Classes Below 26 Students per Class
Reception	80%	100%
Reception/Year 1	63%	97%
Reception/Year 1/Year 2	68%	97%
Reception/Year 1/Year 2/Year 3	92%	100%
Year 1	38%	90%
Year 1/Year 2	24%	89%
Year 1/Year 2/Year 3	43%	81%
Year 2	21%	87%
Year 2/Year 3	16%	70%
Total	46%	91%

Non-consecutive year levels have been included into their corresponding class types, eg Recp/Year 2 has been added to Recp/Year1/Year 2.

As classes with reception students grow during the year, we would expect to see a shift in the percentage of classes with 20 or less students, whereas classes with year 1 students or above are expected to remain relatively stable over the year.

Class Size by Index of Disadvantage

When class size is examined by Index of Disadvantage, it is evident the more disadvantaged schools have lower average class sizes. Average class sizes for the most disadvantaged schools (index category 1) were 16 compared with 22 for the less disadvantaged schools (index category 7).

Social Justice Value	Average Number of Students per Class		
	2004	2006	2008
1	15	15	16
2	16	17	17
3	19	18	19
4	20	18	19
5	22	21	21
6	21	21	21
7	22	21	22

Between 2004 and 2008, class sizes have remained relatively stable, with only minor variances occurring over time. The lower class sizes for more disadvantaged schools reflect the additional staff resources provided to these schools.

FOR FURTHER INFORMATION
 Data Management and Accountability
 Department of Education and Children's Services
 Phone: 08 8226 3269
 Fax: 08 8410 1671
<http://www.decs.sa.gov.au>

Statistical Update

MAY 2009
Issue 71



Government of South Australia
Department of Education and
Children's Services

South Australian Government
Schools

TERM 1 2009 JUNIOR PRIMARY CLASS SIZES

This publication provides summary statistics relating to junior primary class sizes in South Australian government schools as at Term 1 2009. These data are derived from roll class information collected in the school enrolment census held on Friday, 20 February 2009.

Introduction

Roll class information was first collected in the Term 1 2003 Census. The roll class was used as an estimate for the measure of class size for junior primary classes. The data used include classes that have years Reception, Year 1 and/or Year 2 students. In some schools, junior primary classes also include students from higher year levels. The scope of the analysis has been limited to only those junior primary classes up to year 3, where the year 3 students are the older age group in a combined class. Special schools and classes were excluded from the analysis due to different class arrangements in these settings.

The average junior primary class size for the state was 20 students per class (with a standard deviation of ± 5), and has remained stable since 2003 when this information was first collected.

The frequency of class sizes range from less than 5 to 29 with the most frequently occurring class size being 24 students.

Average Class Sizes

Table 1: Average Junior Primary Class Size by District, 2006-2009

Region	Average Number of Students per Class			Difference 2006-9
	2006	2008	2009	
Adelaide Hills	20	21	20	0
Barossa	21	20	21	0
Eastern Adelaide	22	22	21	-1
Eyre and Western	18	19	18	0
Far North	17	17	16	-1
Fleurieu and Kangaroo Island	19	21	21	+2
Limestone Coast	20	19	19	-1
Murray and Mallee	17	17	17	0
Northern Adelaide	20	20	20	0
Southern Adelaide	21	21	21	0
Western Adelaide	20	20	19	-1
Yorke and Mid North	17	18	17	0
Total for State	20	20	20	0

Note: standard deviation ± 5 over the period 2006-2009
Note: 2007 data not available.

The regions with the highest average junior primary class size in 2009 were Eastern Adelaide, Southern Adelaide, Barossa and Fleurieu & Kangaroo Island (all with an average of 21 students).

The regions with the lowest average number of students per junior primary class were Far North (16 students) and Murray & Mallee and Yorke & Mid North (each with an average of 17 students).

Four regions had a decrease in the average class size from 2006, with the majority of these being in the country area. Seven regions stayed the same. The Fleurieu & Kangaroo Island region had an increase in average class size from 2006, but remained the same for 2008 and 2009.

Number of Students by Class Type

Due to a continuous enrolment policy where reception students are permitted to enrol throughout the year, reception only and reception combined classes have smaller averages ranging from 13 students in Reception/Yr1/Yr2/Yr3 classes to 18 students in Reception/Yr 1 and 17 students in Reception/Yr 1/Yr 2 classes. This compares with higher averages of 21 students for Year 1 classes and 22 students for Year 2 classes.

The class type with the highest number of students per class was the Year 2/Year 3 classes with an average of 23, down from 24 in 2006.

Table 2: Average Junior Primary Class Size by Class Type, 2006-2009

Class Type	Average Number of Students per Class		
	2006	2008	2009
Reception	15	16	16
Reception/Year 1	18	18	18
Recp/Year 1/Year 2	17	18	17
Recp/Yr 1/Yr 2/Yr 3	14	13	13
Year 1	21	20	21
Year 1/Year 2	22	22	22
Year 1/Year 2/Year 3	21	19	20
Year 2	22	22	22
Year 2/Year 3	24	23	23

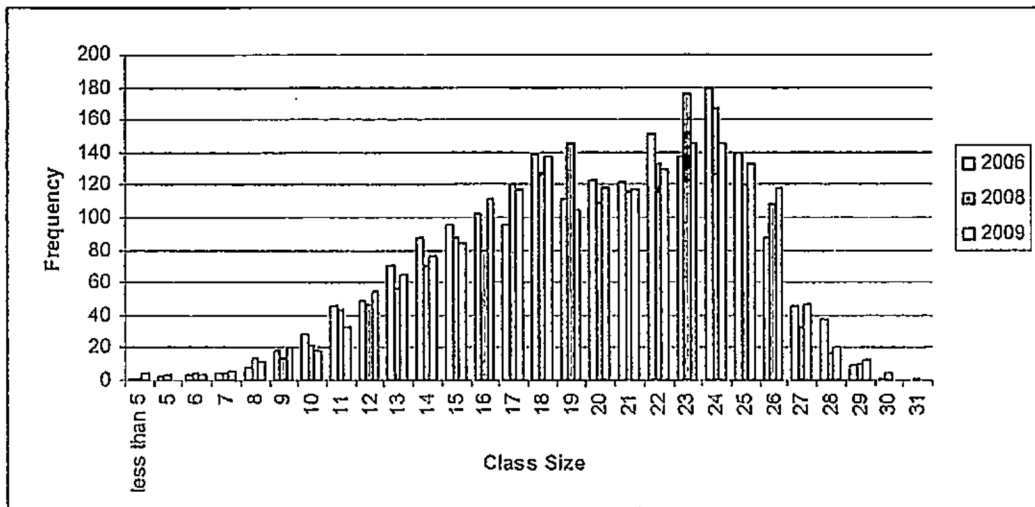


Figure 1: Frequency of Class Size, 2006, 2008 and 2009

Frequency of Class Size

Figure 1 provides a frequency distribution of class sizes.

The most frequently occurring class sizes were 24 students (146 classes) and 23 students (145 classes). This has changed from 2006 when the most frequently occurring class sizes were 24 students (179 classes) and 22 students (151 classes).

Class Size by School Subtype

Rural Schools, Aboriginal Schools and Anangu Schools had the smallest average classes, with 7, 11 and 13 students respectively.

Primary/Secondary Schools, Junior Primary Schools, Primary Schools and Area Schools all had larger junior primary class sizes with the average number of students per class being 20, 20, 20 and 18.

Class Size by Class Type

Eighty nine percent of junior primary classes had less than 26 students per class. This is a decrease from 90% in 2006.

Forty six percent of junior primary classes had less than 20 students per class, this is an increase from 45% in 2006.

Table 3: Percentage of Junior Primary Classes below 20 and 26 Students, 2008

Class Type	% Classes Below 20 Students per Class	% Classes Below 26 Students per Class
Reception	84%	100%
Reception/Year 1	61%	97%
Reception/Year 1/Year 2	72%	99%
Reception/Year 1/Year 2/Year 3	100%	100%
Year 1	34%	87%
Year 1/Year 2	23%	87%
Year 1/Year 2/Year 3	31%	81%
Year 2	21%	80%
Year 2/Year 3	16%	65%
Total	46%	89%

Non-consecutive year levels have been included into their corresponding class types; eg Recp/Year 2 has been added to Recp/Year 1/Year 2.

As classes with reception students grow during the year, we would expect to see a shift in the percentage of classes with 20 or less students, whereas classes with year 1 students or above are expected to remain relatively stable over the year.

Class Size by Index of Disadvantage

When class size is examined by Index of Disadvantage, it is evident the more disadvantaged schools have lower average class sizes. Average class sizes for the most disadvantaged schools (index category 1) were 16 compared with 22 for the less disadvantaged schools (index category 7).

Table 4: Average Junior Primary Class Size by Index of Disadvantage, 2006-2009

Social Justice Value	Average Number of Students per Class		
	2006	2008	2009
1	15	16	16
2	17	17	17
3	18	19	19
4	18	19	19
5	21	21	20
6	21	21	21
7	21	22	22

Between 2006 and 2009, class sizes have remained relatively stable, with only minor variances occurring over time.

FOR FURTHER INFORMATION
 Data Management
 Department of Education and Children's Services
 Phone: 08 8226 3269
 Fax: 08 8410 1671
<http://www.decs.sa.gov.au>

Statistical Update

JULY 2011
Issue 82



Government of South Australia
Department of Education and
Children's Services

South Australian Government
Schools

TERM 1 2010 JUNIOR PRIMARY CLASS SIZES

This publication provides summary statistics relating to junior primary class sizes in South Australian government schools as at Term 1 2010. These data are derived from roll class information collected in the school enrolment census held on Friday, 19 February 2010.

Introduction

Roll class information was first collected in the Term 1 2003 Census. The roll class was used as an estimate for the measure of class size for junior primary classes. The data used include classes that have years Reception, Year 1 and/or Year 2 students. In some schools, junior primary classes also include students from higher year levels. The scope of the analysis has been limited to only those junior primary classes up to year 3, where the year 3 students are the older age group in a combined class. Special schools and classes were excluded from the analysis due to different class arrangements in these settings.

The average junior primary class size for the state was 20 students per class (with a standard deviation of ± 5), and has remained stable since 2003 when this information was first collected.

The frequency of class sizes range from less than 5 to 32 with the most frequently occurring class size being 24 students.

Average Class Sizes

Table 1: Average Junior Primary Class Size by Region, 2008-2010

Region	Average Number of Students per Class			
	2008	2009	2010	2008-10
Adelaide Hills	21	20	20	-1
Barossa	20	21	22	2
Eastern Adelaide	22	21	22	0
Eyre and Western	19	18	18	-1
Far North	17	16	16	-1
Fleurieu and Kangaroo Island	21	21	20	-1
Limestone Coast	19	19	19	0
Murray and Mallee	17	17	17	0
Northern Adelaide	20	20	20	0
Southern Adelaide	21	21	21	0
Western Adelaide	20	19	20	0
Yorke and Mid North	18	17	17	-1
Total for State	20	20	20	0

Note: standard deviation ± 5 over the period 2008-2010

The regions with the highest average junior primary class size in 2010 are Eastern Adelaide and Barossa (with an average of 22 students).

The regions with the lowest average number of students per junior primary class were Far North (16 students) and Murray & Mallee and Yorke & Mid North (each with an average of 17 students).

Five regions had a decrease in the average class size from 2008, with the majority of these being in the country area. Six regions stayed the same. The Barossa region had an increase in average class size from 2008 and 2009.

Number of Students by Class Type

Due to a continuous enrolment policy where reception students are permitted to enrol throughout the year, reception only and reception combined classes have smaller averages ranging from 13 students in Reception/Yr1/Yr2/Yr3 classes to 18 students in Reception/Yr 1 and 17 students in Reception/Yr 1/Yr 2 classes. This compares with higher averages of 21 students for Year 1 classes and 23 students for Year 2 classes.

The class type with the highest number of students per class was the Year 2/Year 3 classes with an average of 24, up from 23 in 2008 and 2009.

Table 2: Average Junior Primary Class Size by Class Type, 2008-2010

Class Type	Average Number of Students per Class		
	2008	2009	2010
Reception	16	16	16
Reception/Year 1	18	18	18
Recp/Year 1/Year 2	18	17	17
Recp/Yr 1/Yr 2/Yr 3	13	13	13
Year 1	20	21	21
Year 1/Year 2	22	22	22
Year 1/Year 2/Year 3	19	20	17
Year 2	22	22	23
Year 2/Year 3	23	23	24

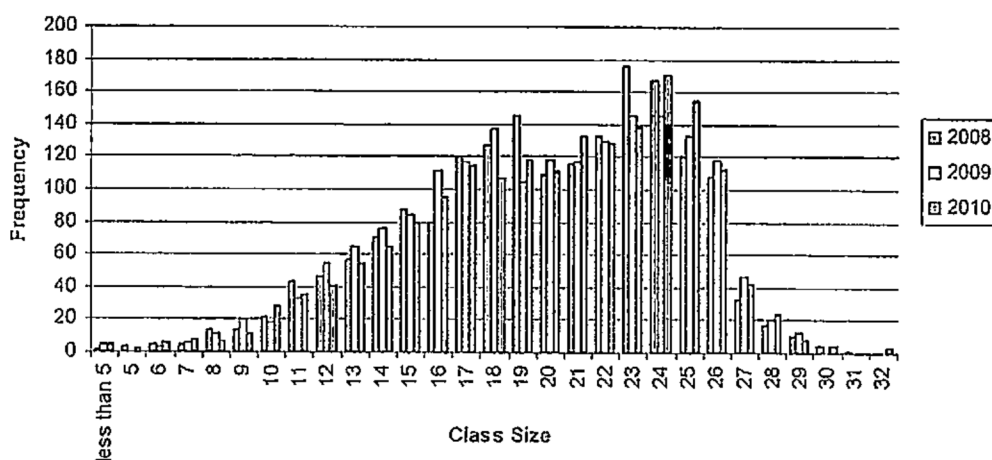


Figure 1: Frequency of Class Size, 2008, 2009 and 2010

Frequency of Class Size

Figure 1 provides a frequency distribution of class sizes.

The most frequently occurring class sizes were 24 students (170 classes) and 25 students (155 classes). This has changed from 2009 when the most frequently occurring class sizes were 24 students (146 classes) and 23 students (145 classes).

Class Size by School Subtype

Rural Schools, Aboriginal Schools and Anangu Schools had the smallest average classes, with 6, 11 and 12 students respectively.

Junior Primary Schools, Primary Schools, Primary/Secondary Schools and Areas Schools all had larger junior primary class sizes with the average number of students per class being 21, 20, 19 and 18.

Class Size by Class Type

Eighty nine percent of junior primary classes had less than 26 students per class. This is the same as in 2009.

Forty three percent of junior primary classes had less than 20 students per class, this is a decrease from 46% in 2009.

Class Type	% Classes Below 20 Students per Class	% Classes Below 26 Students per Class
Reception	74%	99%
Reception/Year 1	60%	98%
Reception/Year 1/Year 2	72%	98%
Reception/Year 1/Year 2/Year 3	90%	95%
Year 1	28%	90%
Year 1/Year 2	21%	89%
Year 1/Year 2/Year 3	50%	94%
Year 2	18%	79%
Year 2/Year 3	16%	64%
Total	43%	89%

Non-consecutive year levels have been included into their corresponding class types, eg Recp/Year 2 has been added to Recp/Year 1/Year 2.

As classes with reception students grow during the year, we would expect to see a shift in the percentage of classes with 20 or less students, whereas classes with year 1 students or above are expected to remain relatively stable over the year.

Class Size by Index of Disadvantage

When class size is examined by Index of Disadvantage, it is evident the more disadvantaged schools have lower average class sizes. Average class sizes for the most disadvantaged schools (index category 1) were 16 compared with 22 for the less disadvantaged schools (index category 7).

Table 4: Average Junior Primary Class Size by Index of Disadvantage, 2008-2010

Social Justice Value	Average Number of Students per Class		
	2008	2009	2010
1	16	16	16
2	17	17	17
3	19	19	19
4	19	19	19
5	21	20	21
6	21	21	22
7	22	22	22

Between 2008 and 2010, class sizes have remained relatively stable, with only minor variances occurring over time.

FOR FURTHER INFORMATION
 Data Management
 Department of Education and Children's Services
 Phone: 08 8226 3269
 Fax: 08 8410 1671
<http://www.decs.sa.gov.au>